

# Our Grads & Current Clients Tell Our Story



entrinsic bioscience secures \$49 million in financing to accelerate development and commercialization of next generation functional ingredients and active pharmaceutical ingredients.



AGTC announces 21,000 square foot of expansion of manufacturing and analytics capabilities to advance commercialization of gene therapy product candidates.



Resilience continues expansion with acquisition of Alachua's Ology Bio-services.



Alachua's Life Sciences Ecosystem raises over \$1 billion in 2020. The life sciences community has accelerated growth with government grants and contracts, mergers and acquisitions, successful financing rounds, and sales revenue.



Gene therapy company AavantiBio launches with \$107 million Series A financing from Perceptive Advisors, Bain Capital Life Sciences, RA Capital Management and Sarepta Therapeutics

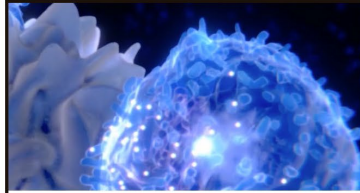
# Our Grads & Current Clients Tell Our Story



Matrix Technologies Opens \$3M Financing Round With Second Investment From JSR Corporation. UF Innovate | Ventures and Gainesville Tech Fund follow on JSR Corporation's Repeat Investment in Matrix Technologies.



Satlantis launches optical camera to International space station and receives capital infusion of 14 million euros.



Inspira Therapeutics has been awarded a \$1.98 million NIH grant for Diabetes Therapy.



etectRx<sup>®</sup>, Inc., receives U.S. Food and Drug Administration (FDA) clearance of its breakthrough patented ingestible event marker, the ID-Cap<sup>®</sup> System.



The Gainesville Innovation District is a walkable urban tech and business community located steps from vibrant downtown and the Nation's 5th- Ranked Public University, and offers premium office, restaurant, lab and retail space – ideal for 9-to-5 and everything in between.



Merck Animal Health and Rapid Genomics Sign Exclusive Agreement on Vaccine Verification

# Testimonials: Jobs-Engine & Community Catalyst



Starting out at **The Hub** instantly elevates the professionalism of your company by both the available resources and presentation through world-class work spaces and conference rooms.

- Albert Fosmoe, Chief Executive Officer



The decision to locate our company at the **Sid Martin Biotech** incubator has been an important factor in our success.

- Tom Bigger, Chief Executive Officer



**The Hub** helped us develop valuable professional service relationships and connected us with experienced business mentors, forming relationships that last to this day.

-Helena Cowley Chief Executive Officer



There will be no exaggeration to say that the 7.5 years spent at the **Sid Martin** have been extremely important and even formative for me as a chemical entrepreneur. It was definitely one of the best periods of my life.

-Dr. Alexander Oliferenko, Chief Executive Officer

