

Xerox Mac Print Driver Configuration Guide

University of Florida – Xerox Private Data

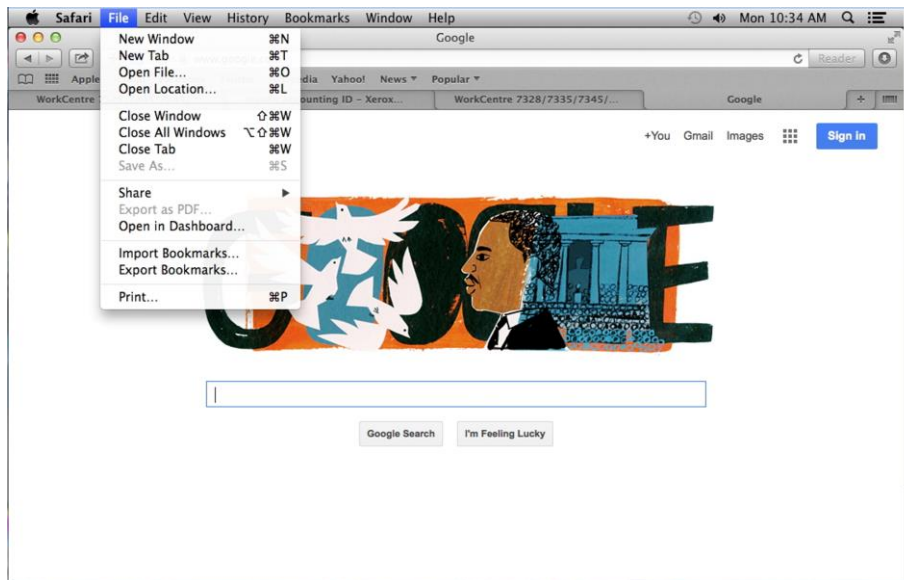


Here is the link to the driver:

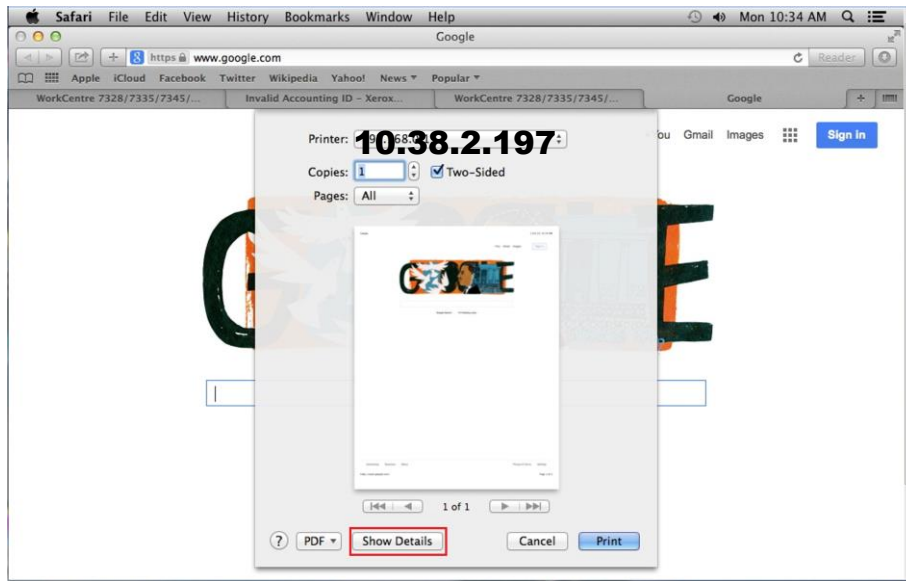
[Mac OS X Print Driver Installer Package 10.7, 10.8, 10.9](#)

Print Driver

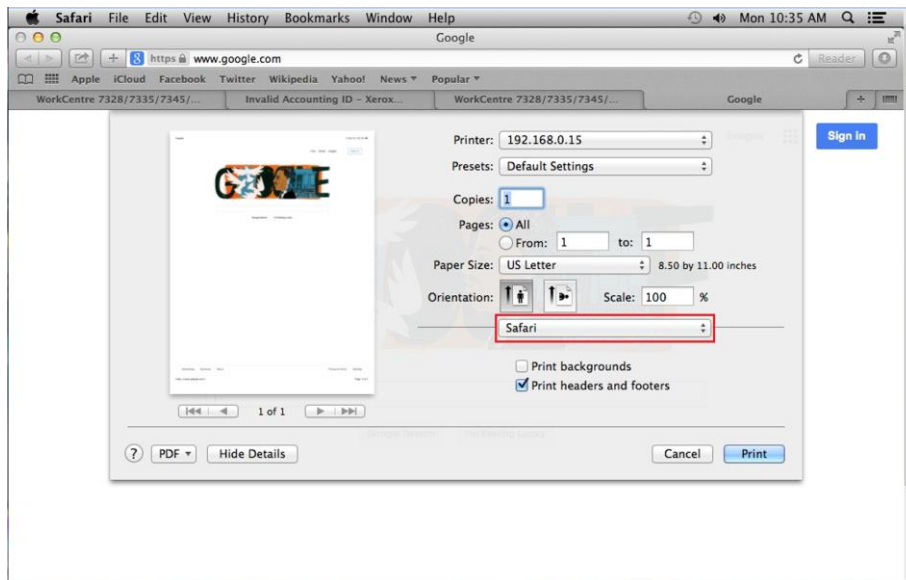
1. Download and install the driver. **Model Xerox WorkCentre 7855**
2. Open Safari and access any web page.
3. Click File and select Print

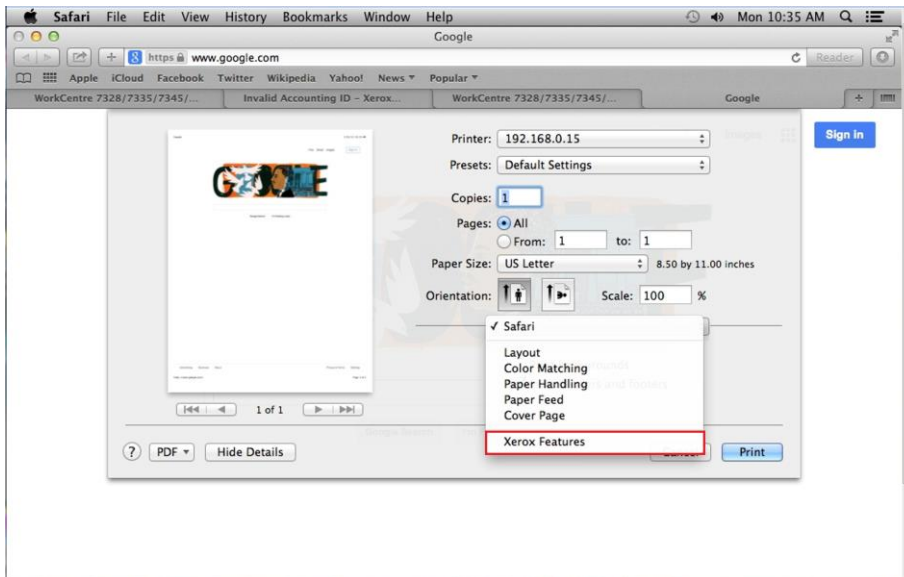


4. From the Print dialog select Show Details button.

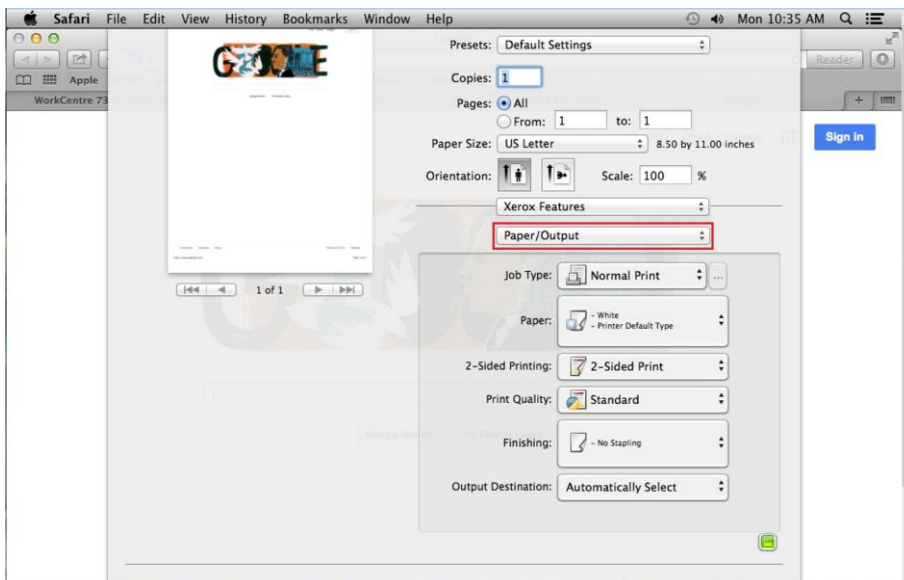


5. Click the button labeled Safari and choose Xerox Features.

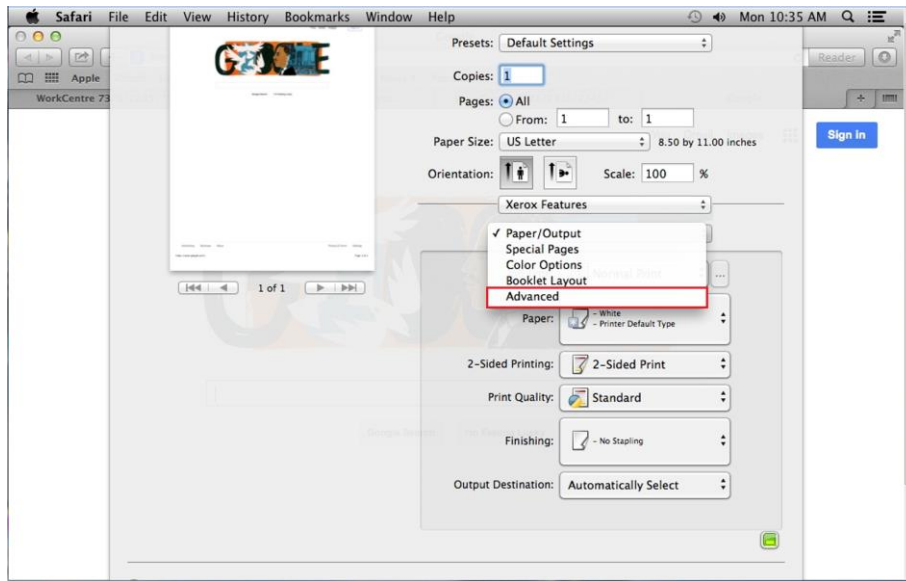




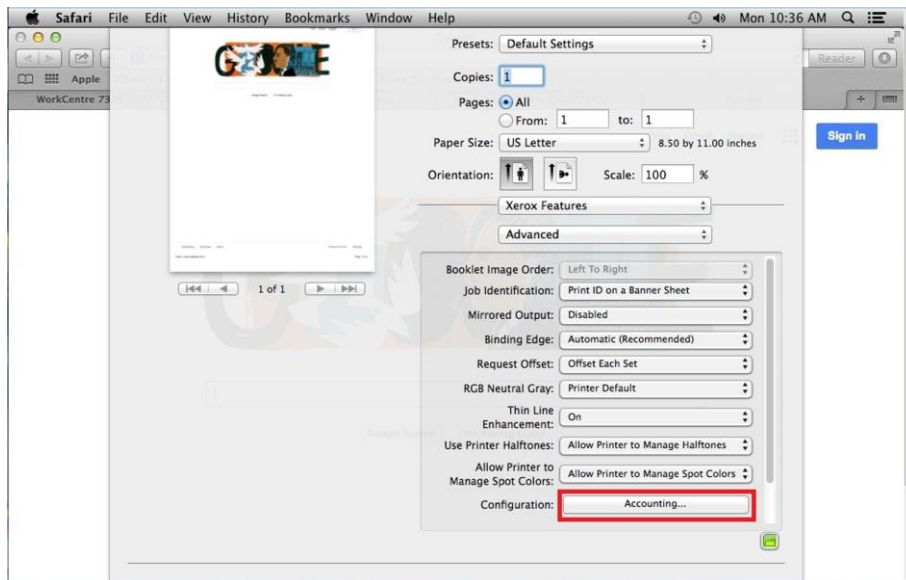
6. From the Xerox Features displayed choose Paper/Output.



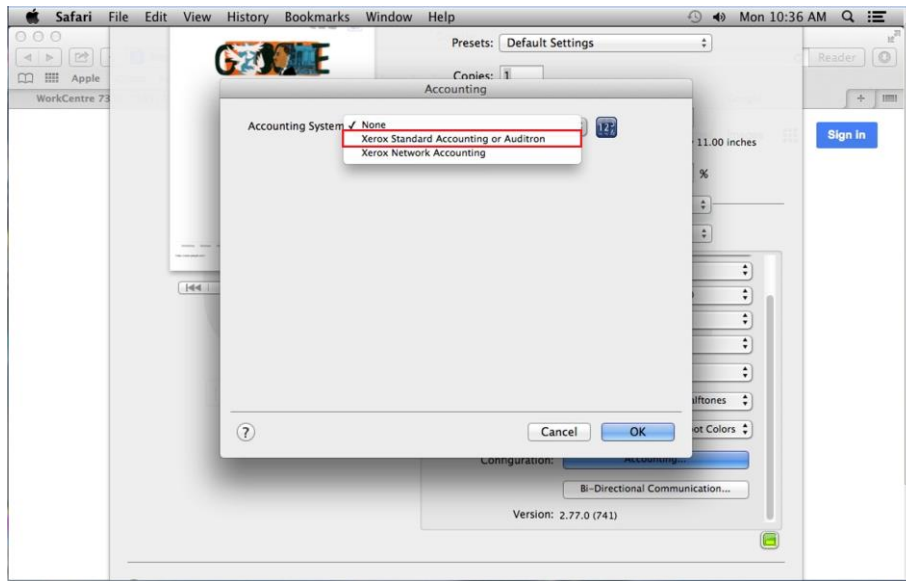
7. Select Advanced.



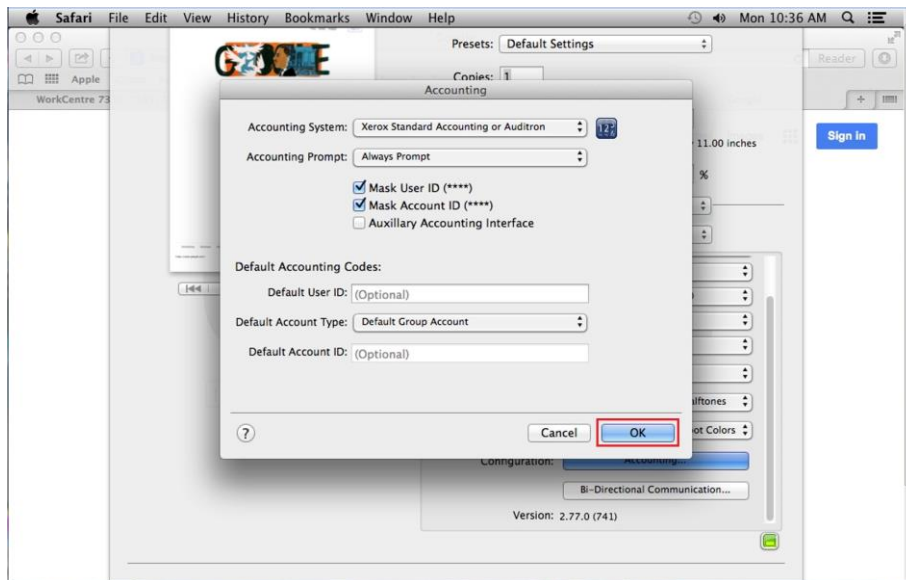
8. From the Advanced Choose Accounting.



9. In the Accounting dialog click the pull down and select Xerox Standard Accounting or Auditor.



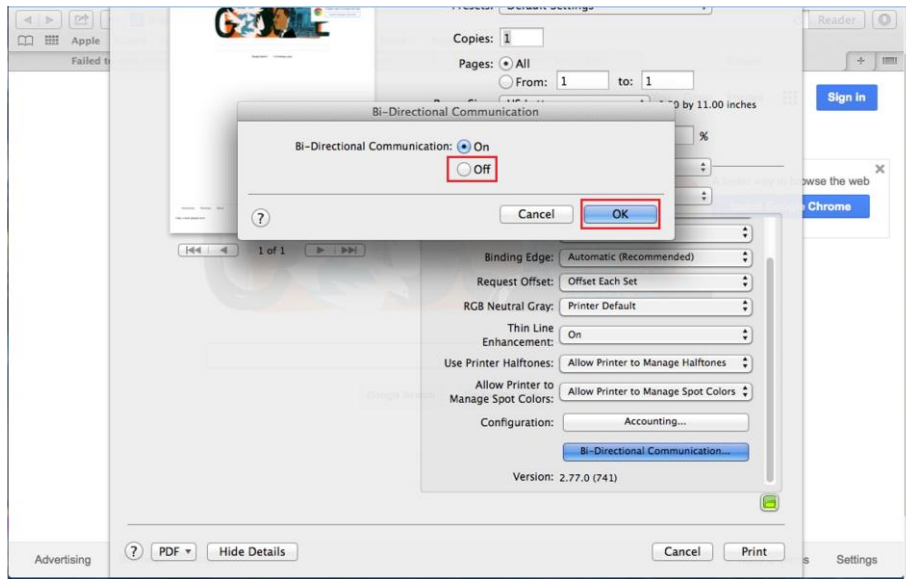
10. Leave all the settings set to default and click OK.



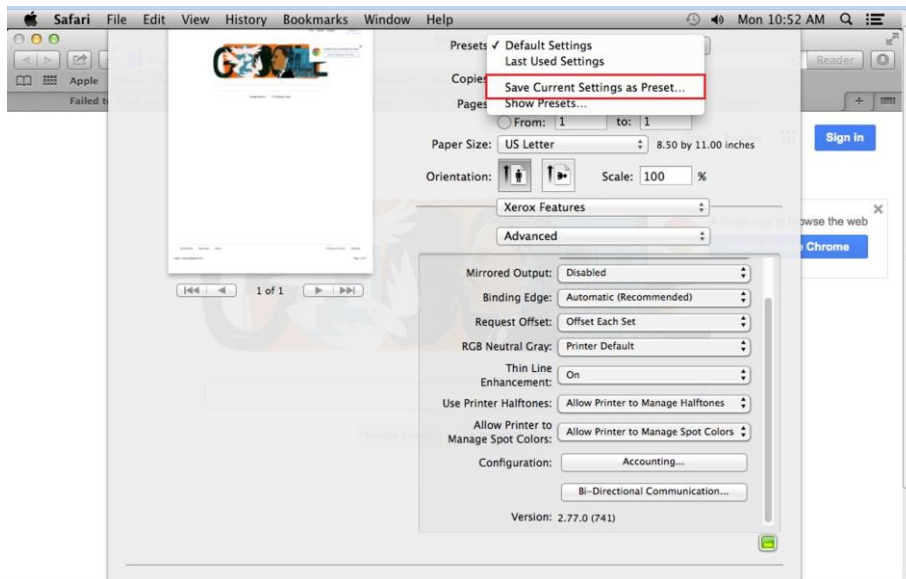
11. Next turn off Bi-Directional Communication.

From the Advanced option choose Bi-Directional Communication. Then choose Off and click OK

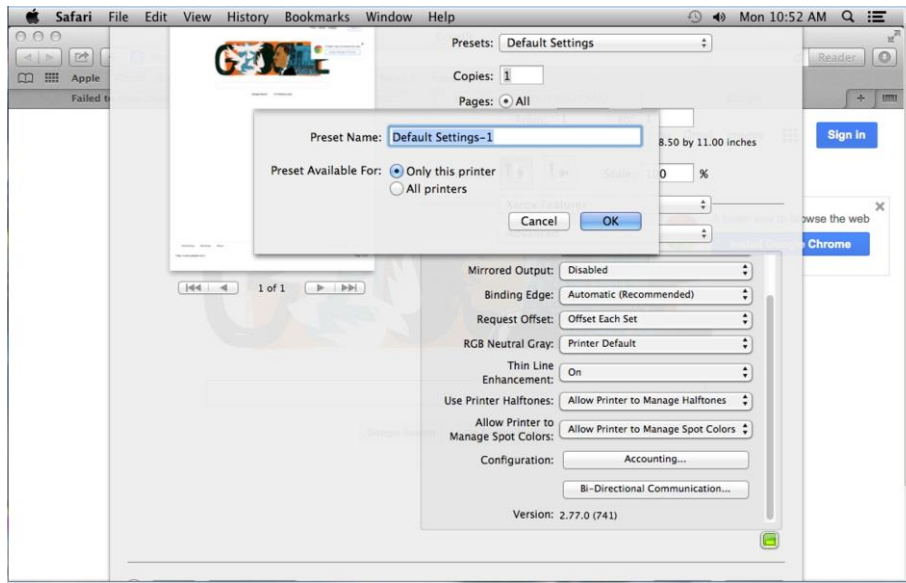
Note: On OSX 10.10 this setting has been moved.



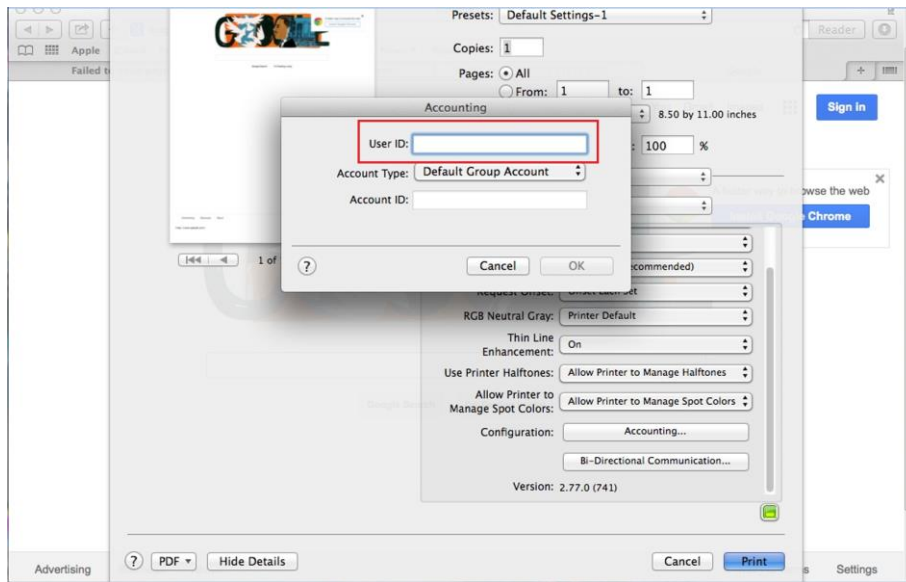
12. Now the settings need to be saved as a Default Setting, Click Presets and choose Save Current Settings as Preset.



13. Name the Preset and select OK.



14. Click Print and you will be prompted for your User ID, then click OK.



The printer is now setup to print to the MFD that is using Xerox Standard Accounting as long as the new Preset is used.